



DRAWINGS

OF

da Vinci

Exlibris

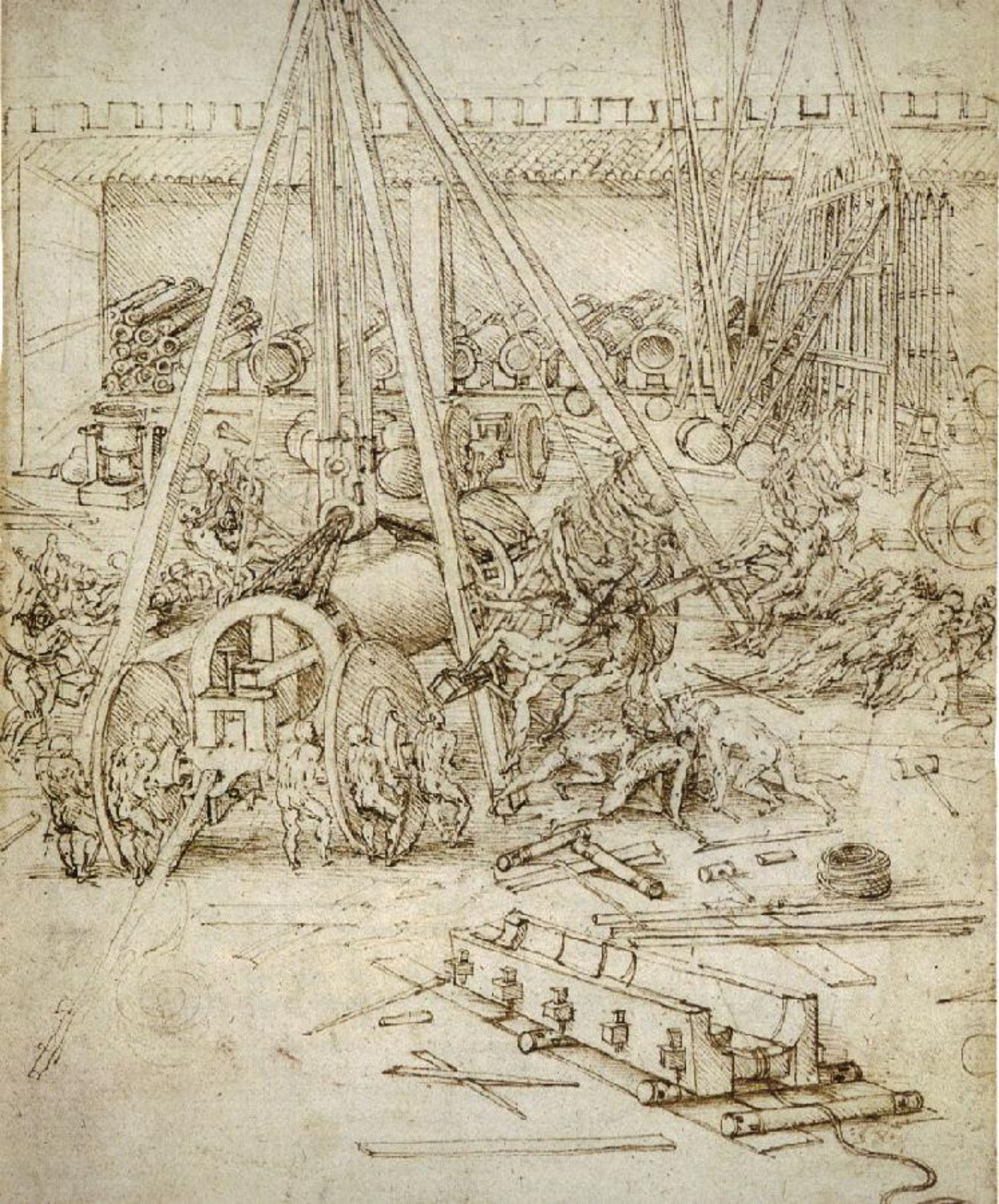
Biblioteca del Amanuense



2005

vive como de viaje, pues nada difiere allí o aquí, si se vive en todas partes como en la gran ciudad que es el mundo









Handwritten notes in a cursive script, likely a historical or scientific text, located below the sketch. The text is partially obscured and difficult to decipher due to the handwriting and image quality.







musculus pectoralis
interius & externus
diaphragma

musculus
transversus
abdominis



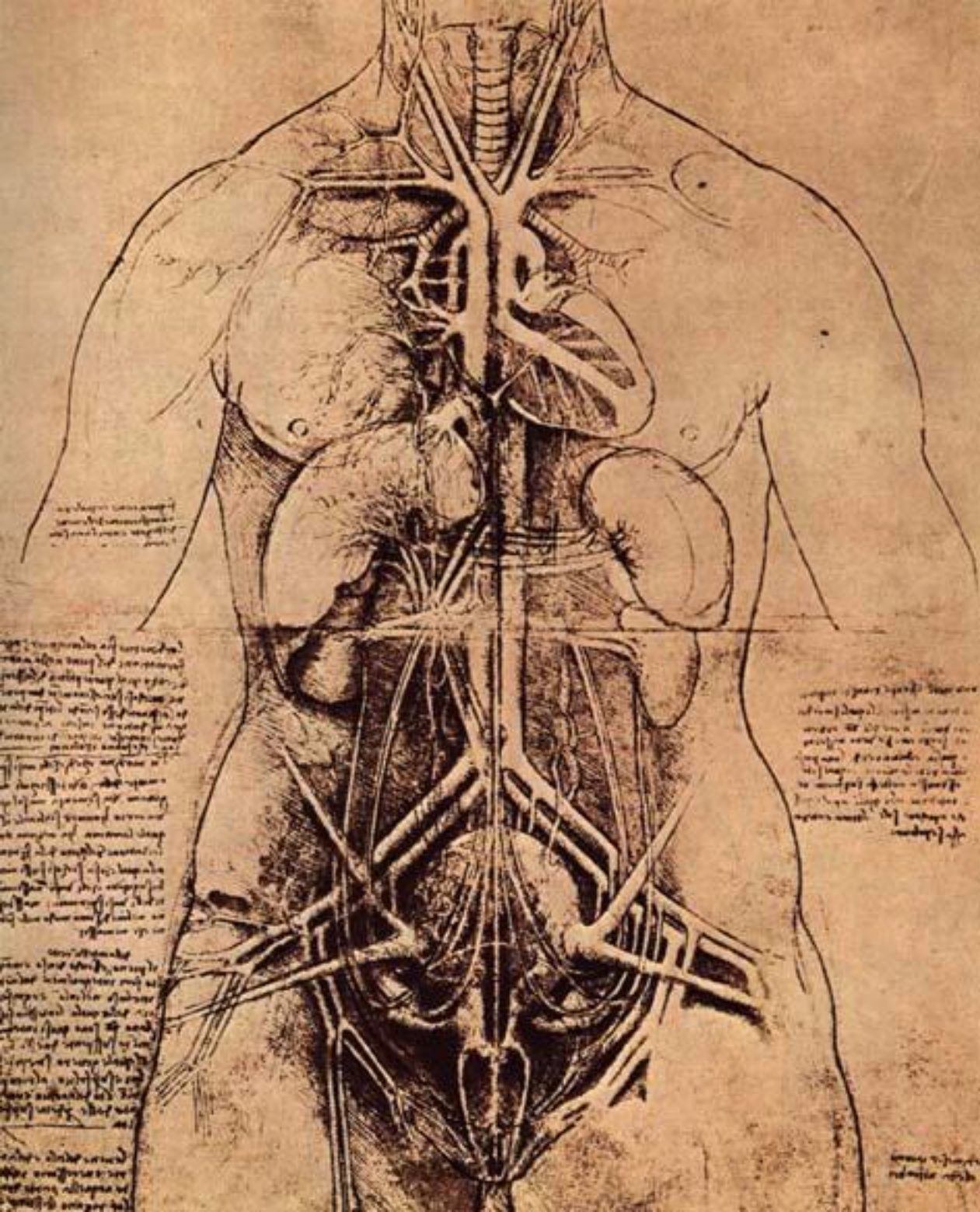


Figura 1. *[Illegible handwritten text]*

[Illegible handwritten text]

[Illegible handwritten text]

[Illegible handwritten text]

[Illegible handwritten text]

[Illegible handwritten text]

Handwritten text in a cursive script, likely a medical treatise, surrounding the illustrations. The text is written in a dark ink and covers the left and bottom portions of the page.



Handwritten text in a cursive script, likely a medical treatise, surrounding the illustrations. The text is written in a dark ink and covers the middle and right portions of the page.



Handwritten text in a cursive script, likely a medical treatise, surrounding the illustrations. The text is written in a dark ink and covers the middle and right portions of the page.



Handwritten text in a cursive script, likely a medical treatise, surrounding the illustrations. The text is written in a dark ink and covers the middle and right portions of the page.



Handwritten text in a cursive script, likely a medical treatise, surrounding the illustrations. The text is written in a dark ink and covers the middle and right portions of the page.

Handwritten text in a cursive script, likely a medical treatise, surrounding the illustrations. The text is written in a dark ink and covers the middle and right portions of the page.

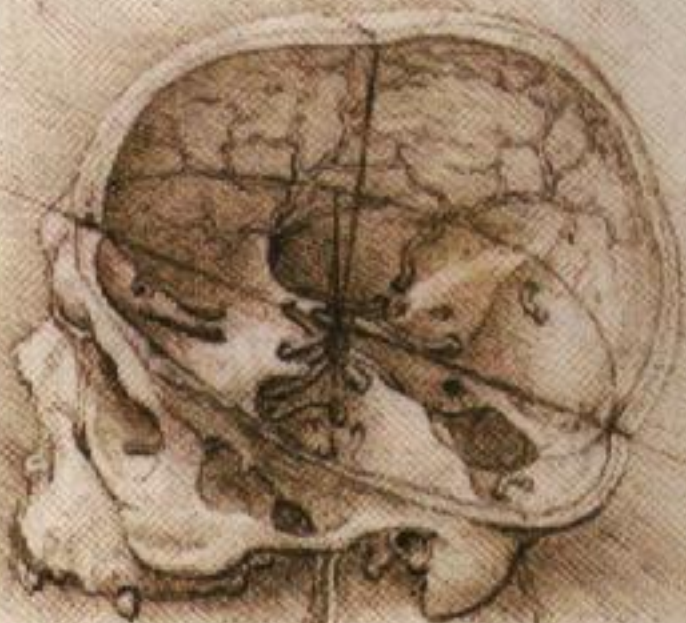






LIONARDO DA VINCI

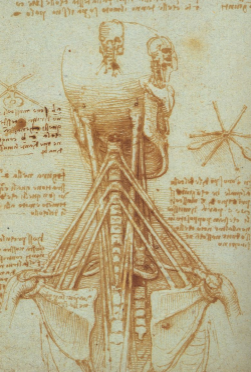














57

non est in mundo
quod non sit in mundo
quod non sit in mundo
quod non sit in mundo
quod non sit in mundo
quod non sit in mundo
quod non sit in mundo
quod non sit in mundo
quod non sit in mundo
quod non sit in mundo



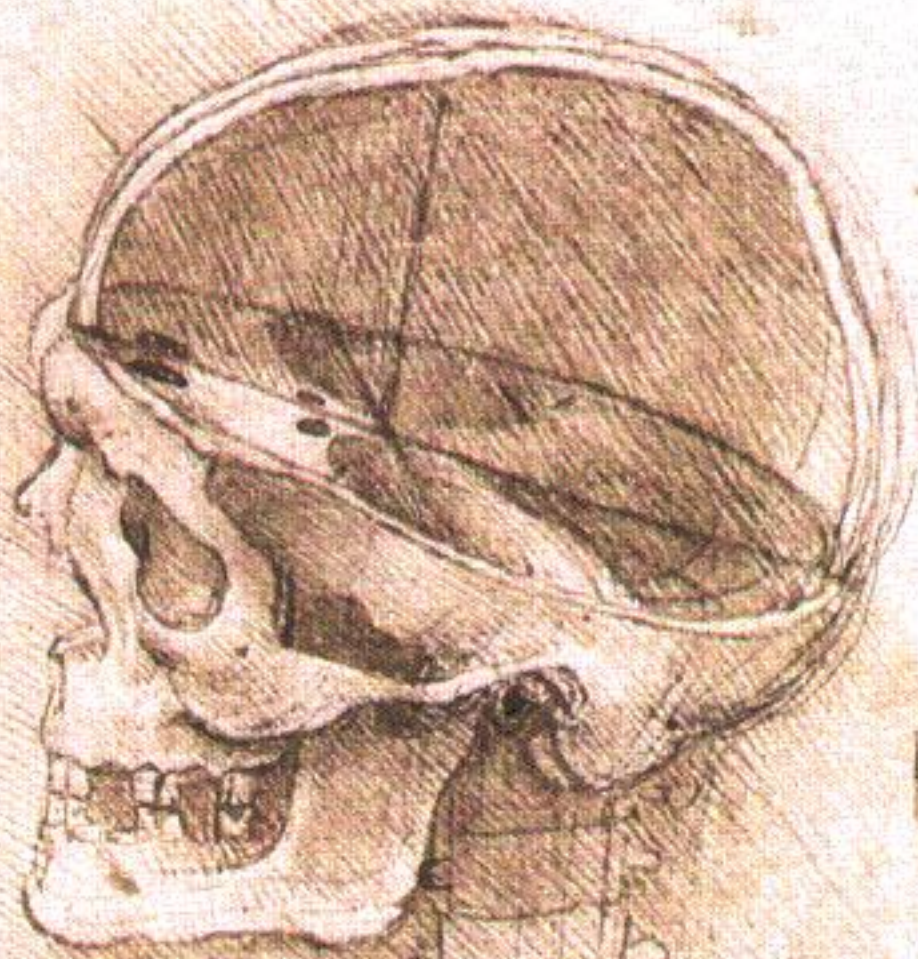


0.11

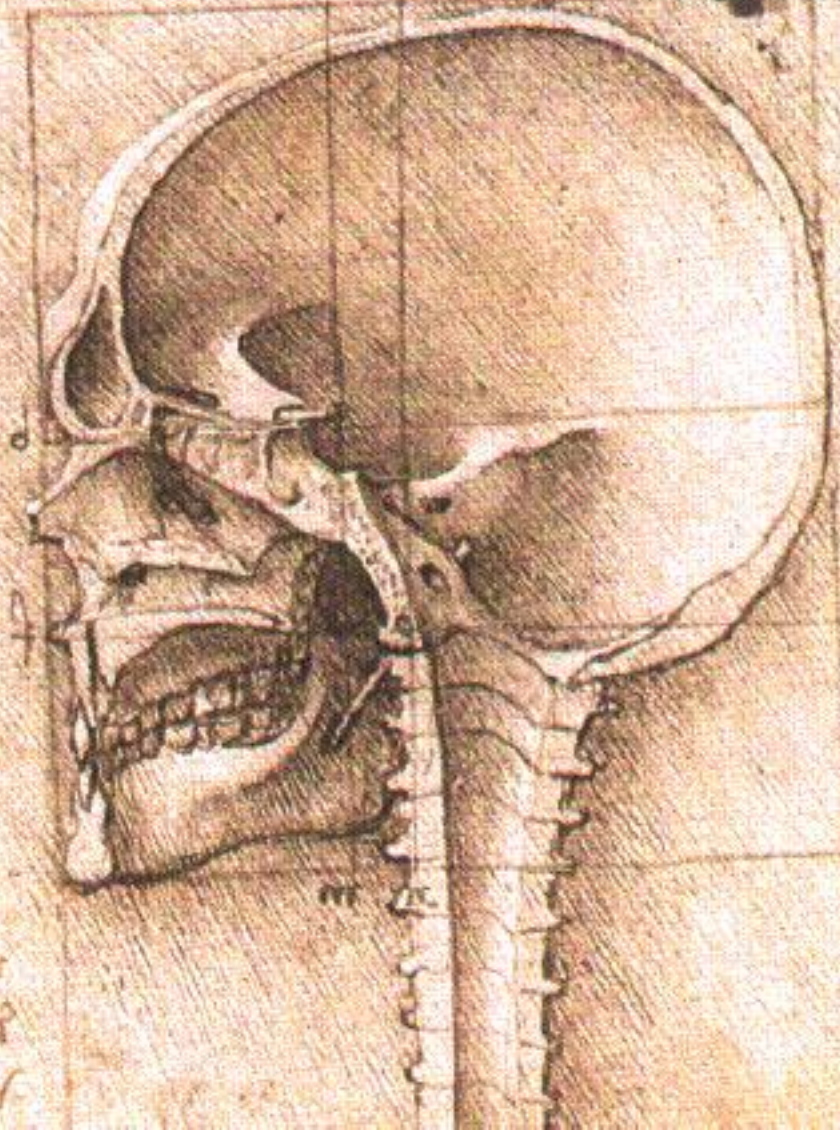




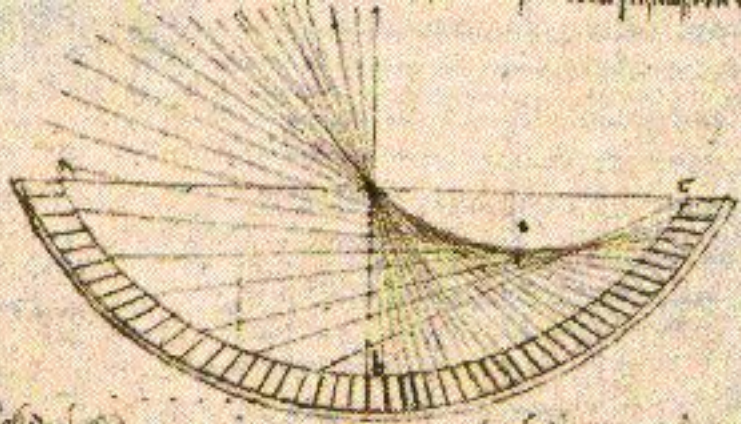




Handwritten text in the upper left corner, likely a title or description of the anatomical drawing.



Handwritten text in the lower left corner, likely a continuation of the title or description.



Handwritten text in a cursive script, likely a medical or anatomical description, located on the left side of the page.

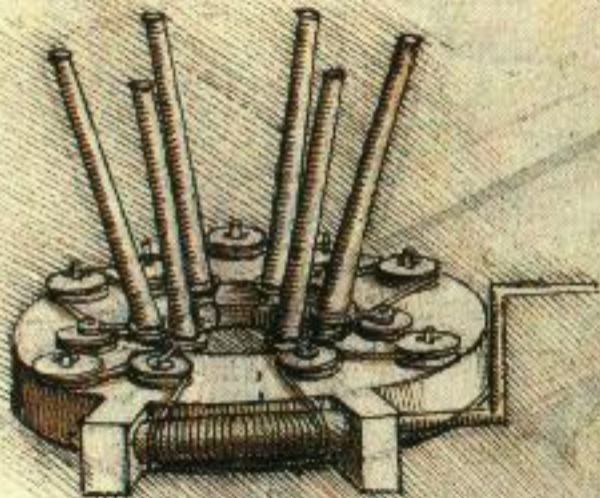
Handwritten text in a cursive script, likely a medical or anatomical description, located at the bottom left of the page.



Handwritten text in the top left corner, likely a title or description, written in a cursive script. The text is partially obscured and difficult to decipher, but appears to include the name of the location, possibly "L'Alto di S. Pietro".







Handwritten text in a cursive script, likely Latin, located at the top of the page. The text is partially obscured by the main anatomical drawing.



Handwritten text in a cursive script, likely Latin, located to the right of the main anatomical drawing.

Handwritten text in a cursive script, likely Latin, located below the main anatomical drawing.



Handwritten text in a cursive script, likely Latin, located below the small anatomical drawings.



Handwritten text in a cursive script, likely Latin, located at the bottom left of the page.

Handwritten text in a cursive script, likely Latin, located at the bottom of the page.

